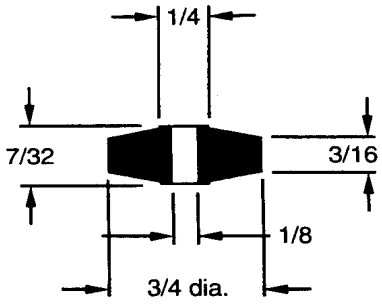
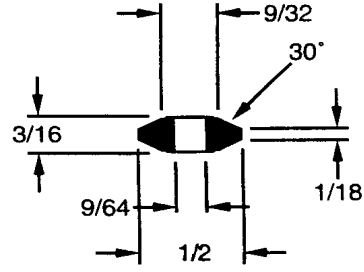
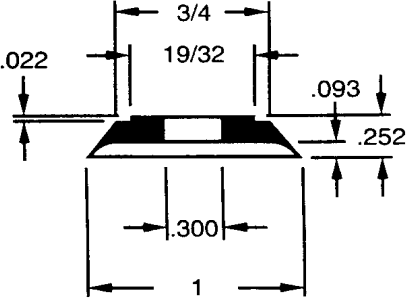
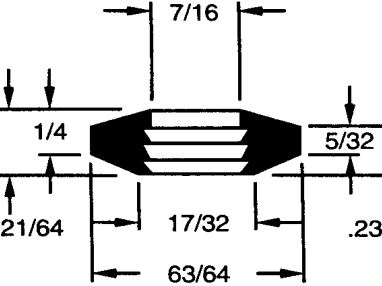
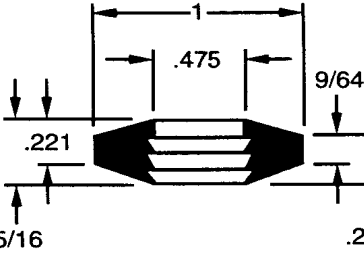
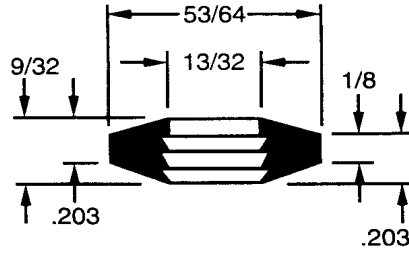
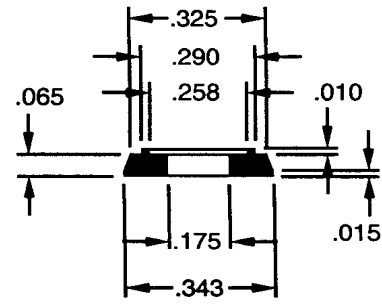
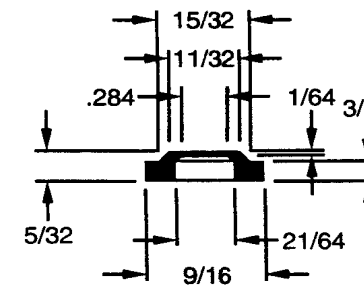
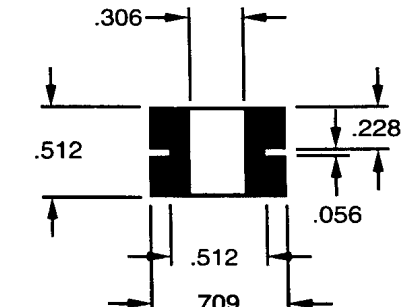
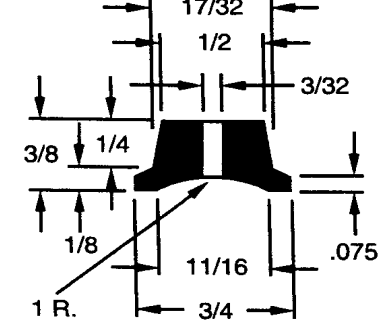
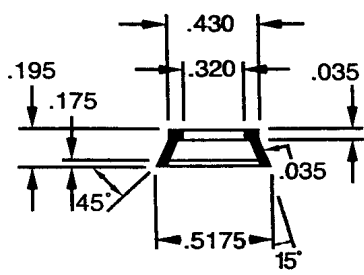
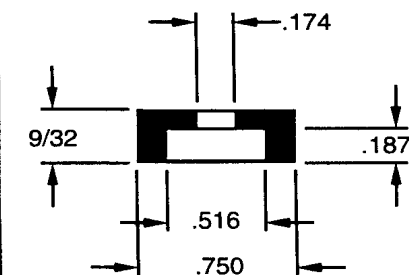
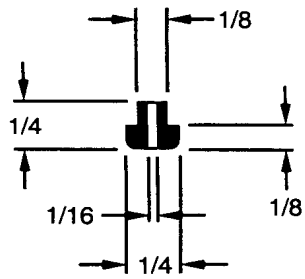
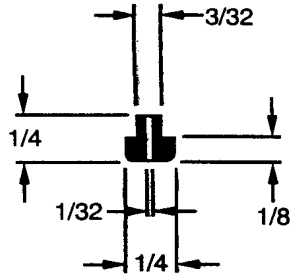


Molded Parts of Irregular Design

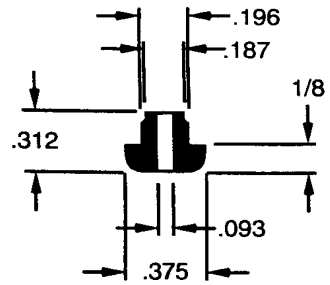
 <p>Technical drawing of part R270 showing a cross-section of a hexagonal-shaped component with a central vertical slot. Dimensions include a top width of 1/4, a total width of 3/4 dia., and various thickness and offset measurements.</p> <p>R270</p>	 <p>Technical drawing of part 2530 showing a cross-section of a hexagonal-shaped component with a central vertical slot and a 30-degree chamfered edge. Dimensions include a top width of 9/32, a total width of 1/2, and various thickness and offset measurements.</p> <p>2530</p>	 <p>Technical drawing of part 15001 showing a cross-section of a trapezoidal component with a central vertical slot. Dimensions include a top width of 3/4, a total width of 1, and various thickness and offset measurements.</p> <p>15001</p>
 <p>Technical drawing of part 2478 showing a cross-section of a hexagonal-shaped component with a central vertical slot and horizontal internal lines. Dimensions include a top width of 7/16, a total width of 63/64, and various thickness and offset measurements.</p> <p>2478</p>	 <p>Technical drawing of part 2483 showing a cross-section of a hexagonal-shaped component with a central vertical slot and horizontal internal lines. Dimensions include a top width of 1, a total width of 1, and various thickness and offset measurements.</p> <p>2483</p>	 <p>Technical drawing of part 2484 showing a cross-section of a hexagonal-shaped component with a central vertical slot and horizontal internal lines. Dimensions include a top width of 53/64, a total width of 1, and various thickness and offset measurements.</p> <p>2484</p>
 <p>Technical drawing of part 2487 showing a cross-section of a component with a central vertical slot. Dimensions include a top width of .325, a total width of .343, and various thickness and offset measurements.</p> <p>Scale 2:1</p> <p>2487</p>	 <p>Technical drawing of part 2525 showing a cross-section of a component with a central vertical slot. Dimensions include a top width of 15/32, a total width of 9/16, and various thickness and offset measurements.</p> <p>2525</p>	 <p>Technical drawing of part 3305 showing a cross-section of a component with a central vertical slot. Dimensions include a top width of .306, a total width of .709, and various thickness and offset measurements.</p> <p>3305</p>
 <p>Technical drawing of part 2479 showing a cross-section of a component with a central vertical slot and a 1 R fillet. Dimensions include a top width of 17/32, a total width of 3/4, and various thickness and offset measurements.</p> <p>2479</p>	 <p>Technical drawing of part 2485 showing a cross-section of a component with a central vertical slot and a 15-degree chamfered edge. Dimensions include a top width of .430, a total width of .5175, and various thickness and offset measurements.</p> <p>2485</p>	 <p>Technical drawing of part 2588 showing a cross-section of a component with a central vertical slot. Dimensions include a top width of .174, a total width of .750, and various thickness and offset measurements.</p> <p>2588</p>



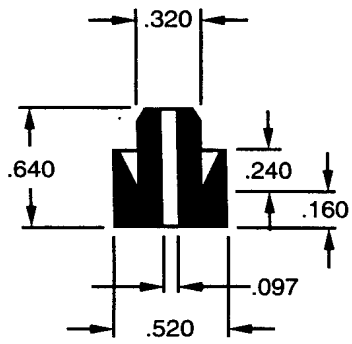
2527



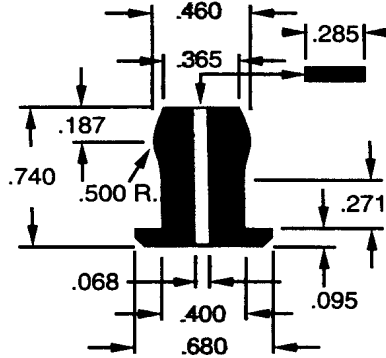
2509



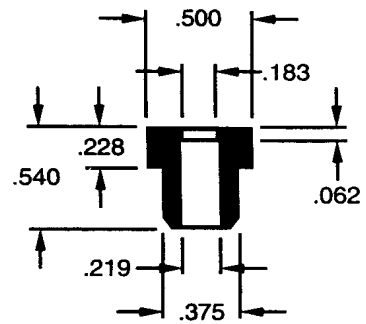
2587



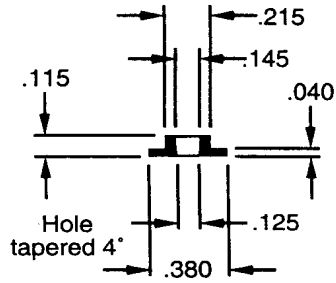
2585



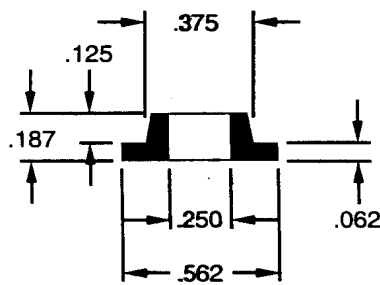
2491



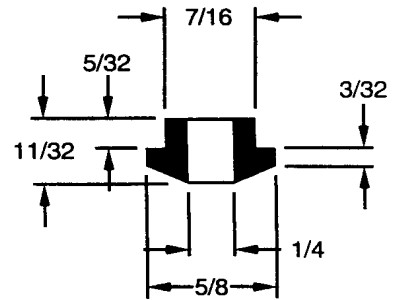
2576



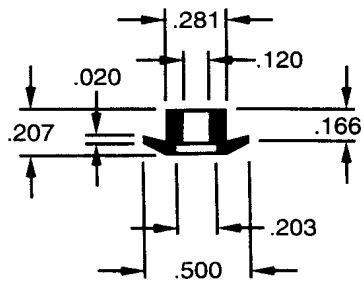
2539



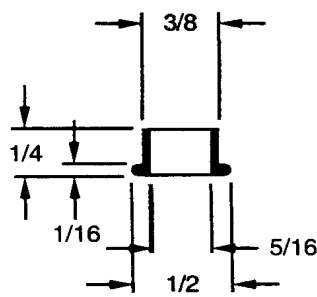
2692



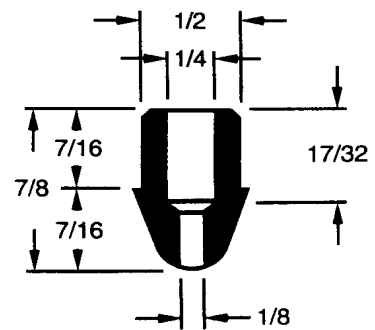
2433



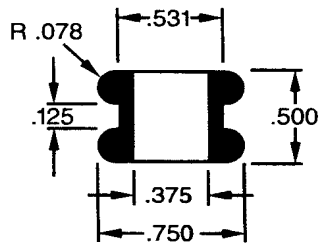
2568



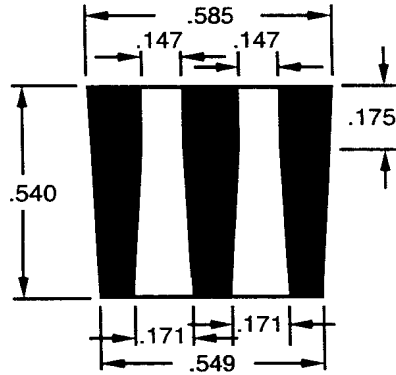
2400



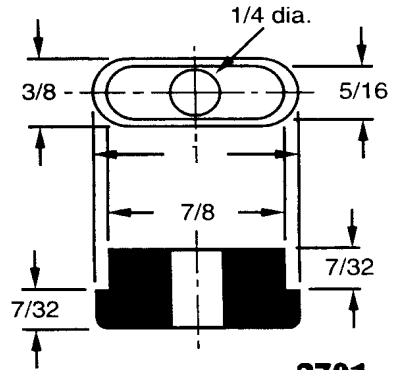
2444



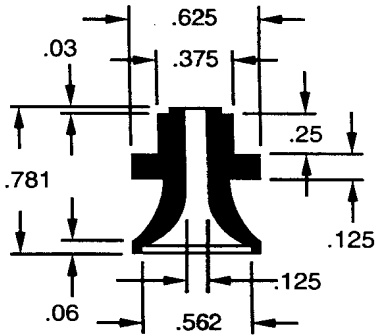
1109



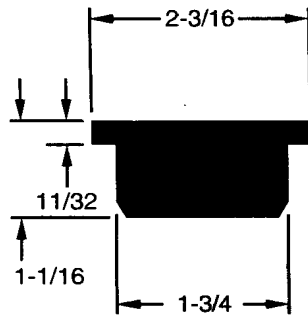
2921



2701

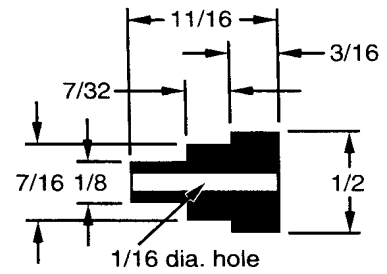


2593

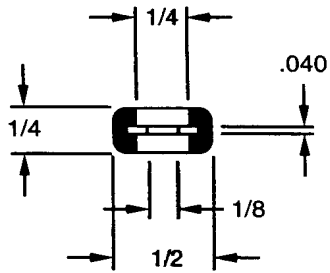


1/2 Scale

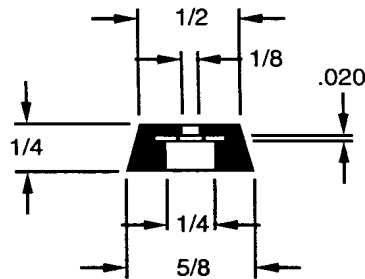
2451



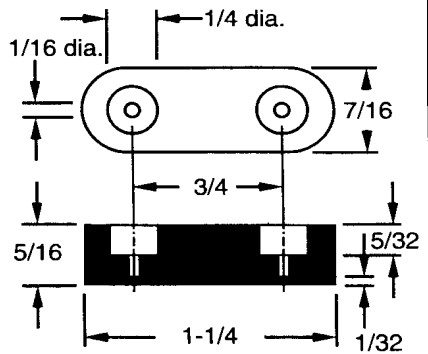
2404



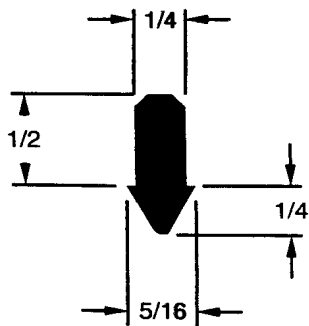
2581W



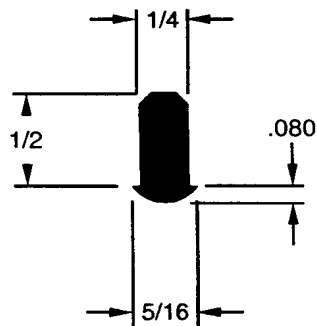
2569W



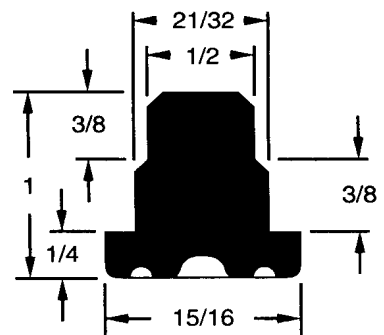
2573



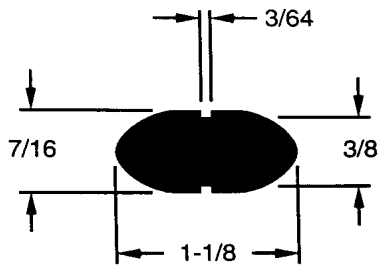
2570-A



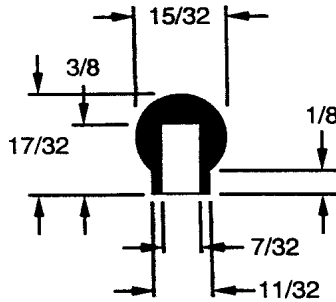
2570-B



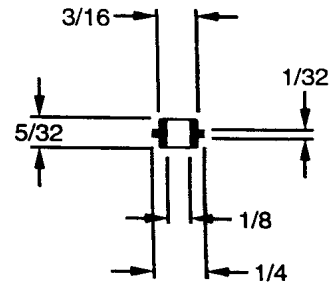
2466



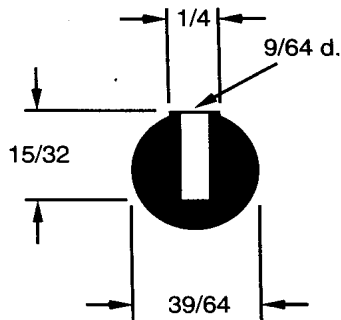
651



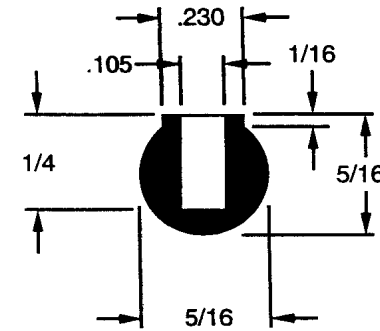
2499



2563

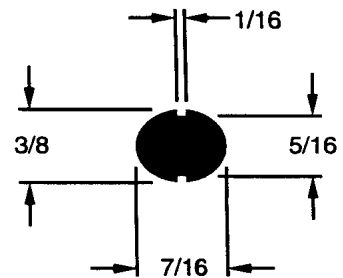


2455

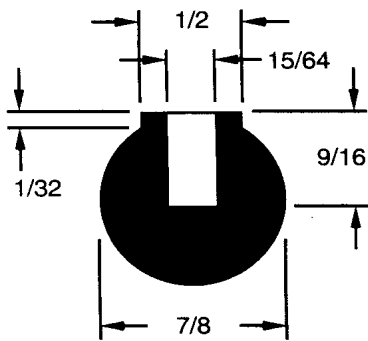


Scale 2:1

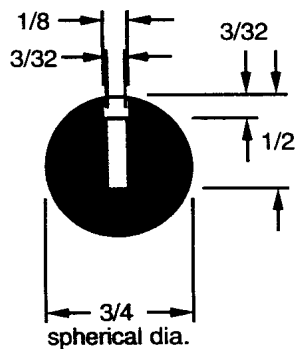
619



650



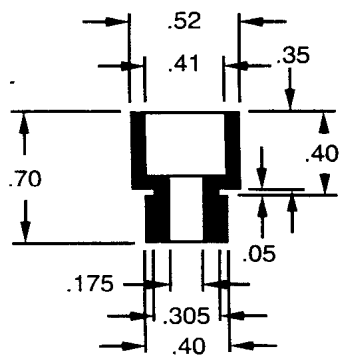
2610



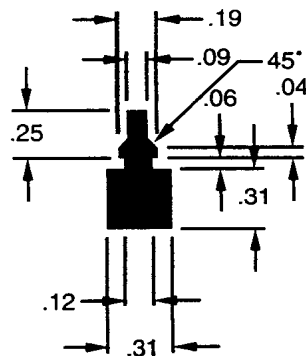
674

Solid Round Balls

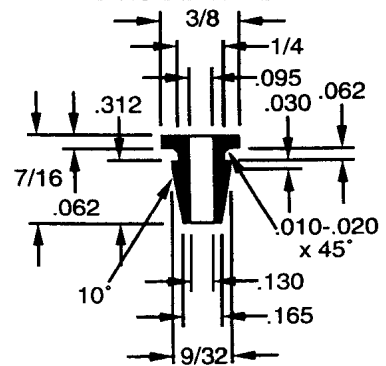
Part No.	Size
664	1/8
665	1/4
2993	3/8
2636	7/16
656	1/2
659	3/4



2604

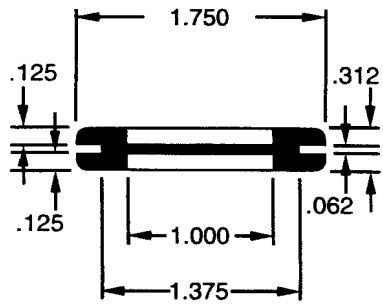


2605

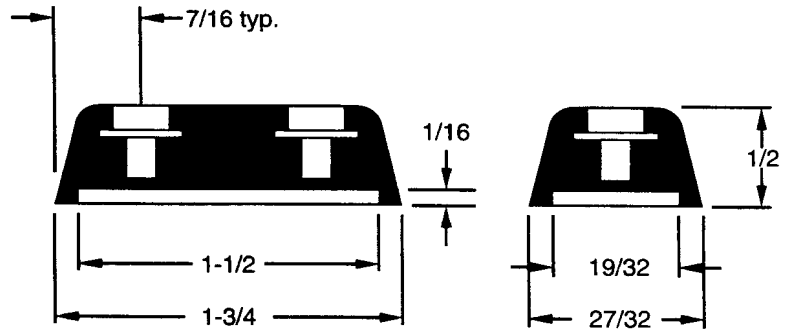
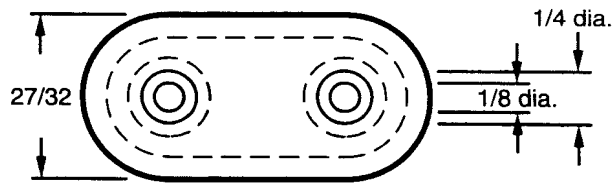


Tapered I.D.

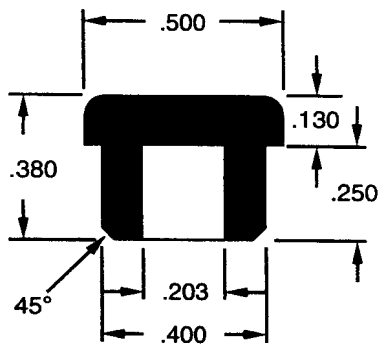
2619



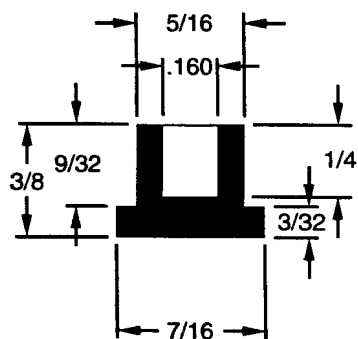
2626



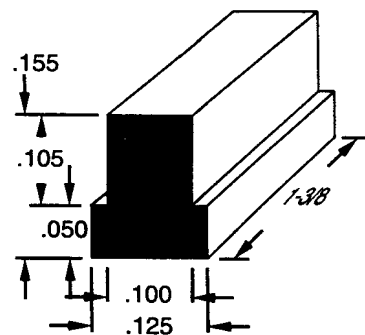
2612W



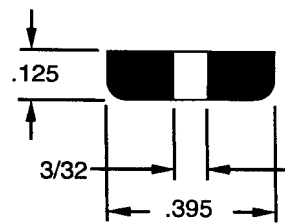
2630



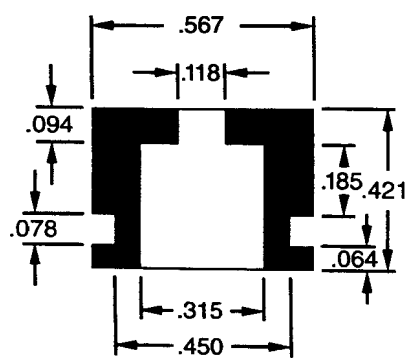
2639



2614

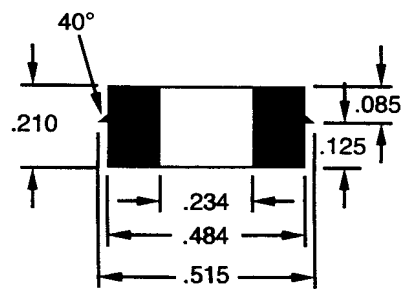


2914

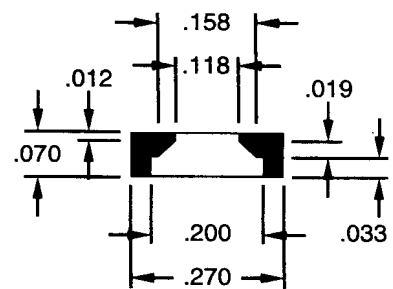


Scale 2:1

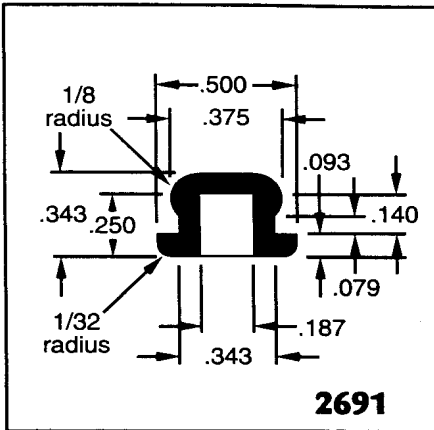
9841



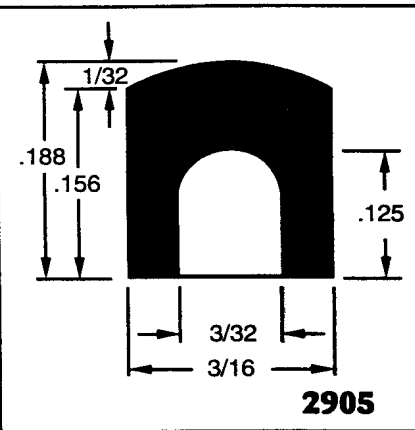
2695



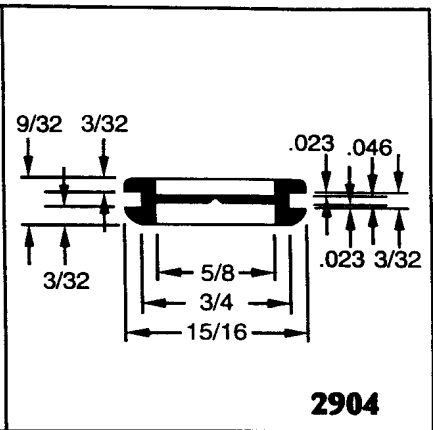
2907



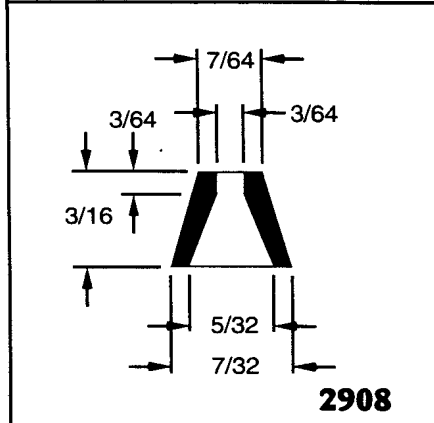
2691



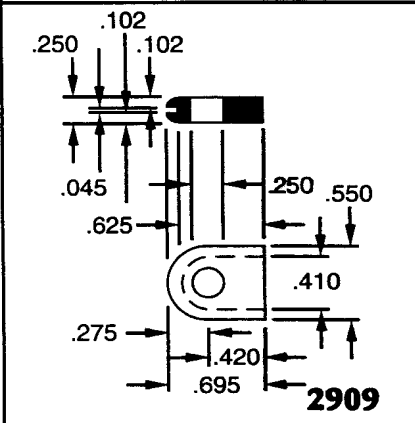
2905



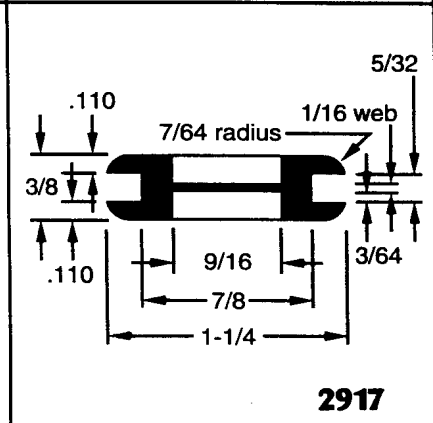
2904



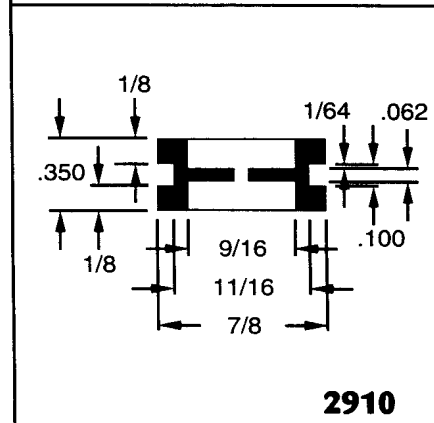
2908



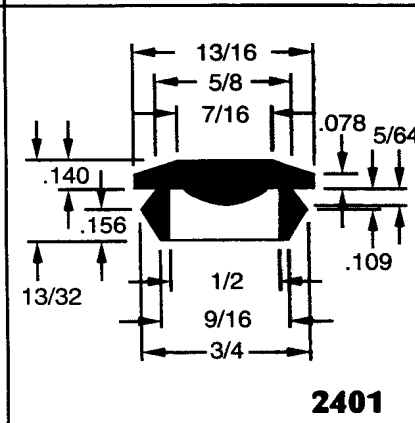
2909



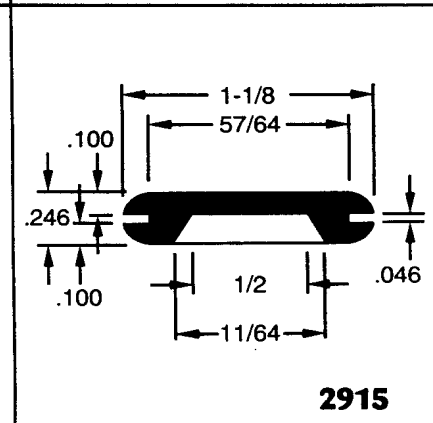
2917



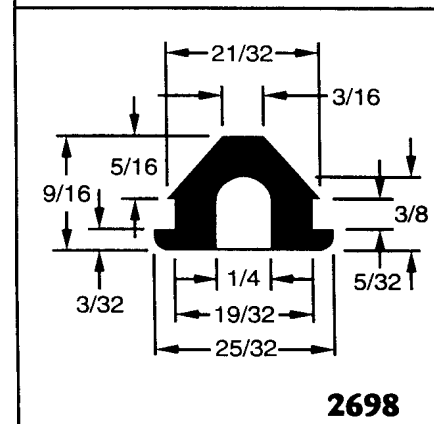
2910



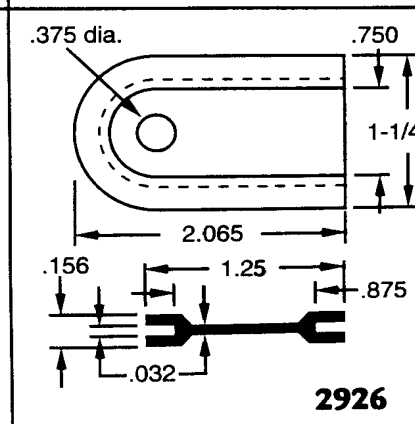
2401



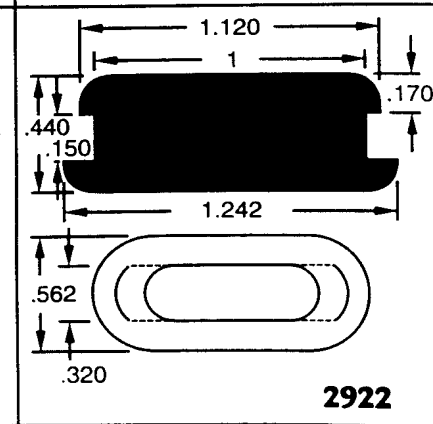
2915



2698



2926



2922